

# DC



TRAINING, CAFE/MEETING, & CONFERENCE TABLES | 4 BASE STYLES | 2 HEIGHTS | 4 EDGE STYLES | 12 SHAPES | 44 HPL FINISHES



DC series table bases integrate steel columns with elongated cast aluminum feet, offering a sturdy yet refined look, available in four styles.

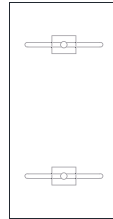


## 11 SHAPES | RECTANGLE, WEDGE, BOAT, DIAMOND, BULLET, BOW END, RACETRACK, BOAT ROUNDED, OVAL, ROAD, & SQUARE

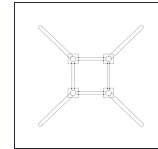


## 4 BASE STYLES | T, DOUBLE T, 1 POST X-BASE, & 4 POST X-BASE

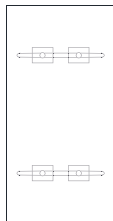
- 2 Heights: 29", 42"
- 11 powdercoat finishes
- Leveling glides included



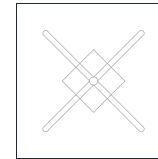
**BASE:** (2) T  
**LENGTHS:** up to 96"  
**TOP:** (1) piece



**BASE:** (4) Post X  
**DIAMETERS:** up to \*96"  
**TOP:** (1) piece, lengths up to 60".  
 (2) pieces, \*72" - \*96"



**BASE:** (2) Double T  
**LENGTHS:** up to \*168"  
**TOP:** (1) piece, lengths up to 96"  
 (2) pieces for lengths \*120" - \*168"



**BASE:** (1) Post X  
**DIAMETERS:** up to 54"  
**TOP:** (1) piece

\*Refers to a 2-piece top with additional bases. Spline & joint fasteners included with table.

## 44 STANDARD HPL FINISHES | 10 SOLIDS, 14 PATTERNS & 20 WOOD GRAINS

- High Pressure Laminate Surfaces
- Matching & Coordinating Edge Banding
- Non-Standard Finishes- See Spec Guide or Consult Factory for Details

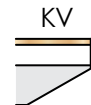
visit our website <https://primewayinc.com/resources/> "Finishes" section to view/download all specification info

## 4 EDGE STYLES | MATCHING & COORDINATING FINISHES

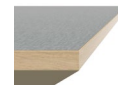
**ABS 1:** PVC-free impact resistant flat edge (**S**)



**ABS 2:** "Multiply Look" flat edge (**M**)  
 Silver Metallic flat edge (**SM**)



**ABS 3:** Knife, 1/2" Flat edge-  
 with painted bevel (**KV**)



## ACCESSORIES | POWER DATA OPTIONS, FOOT EXTENSIONS, UNDERMOUNT HOOKS, ROUND GROMMET, WIRE MANAGEMENT, & FLIPTOP MECHANISM, & MORE

A wide variety of power/ data options are available for various needs. Refer to our spec guide for all PPD units & optional accessories.



[www.primewayinc.com](http://www.primewayinc.com)