

# Primeway

## STANDARD FINISHES

2020 |  Primeway <sup>INC.</sup>

10 SOLIDS | 14 PATTERNS | 20 WOOD GRAINS | 11 POWDERCOATS

4250 NORMANDY COURT | ROYAL OAK, MI 48073 | 248.583.6922

[WWW.PRIMEWAYINC.COM](http://WWW.PRIMEWAYINC.COM) | VOL.1019



FROSTY WHITE



DESIGNER WHITE



ANTIQUE WHITE



PEPPERDUST



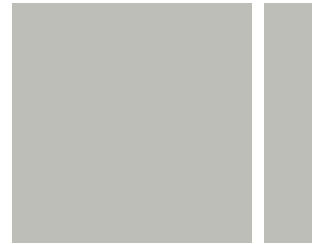
SHADOW



SLATE GREY



NORTH SEA



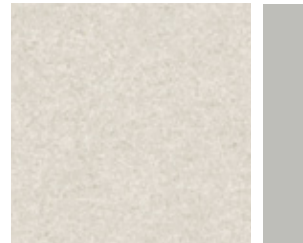
FASHION GREY



DOVE GREY



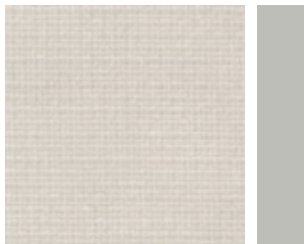
BLACK



SHADOW ZEPHYR  
EDGE: FASHION GREY



WHITE TIGRIS  
EDGE: FASHION GREY



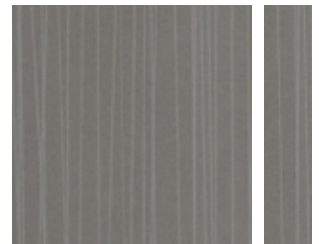
GREY MESH  
EDGE: FASHION GREY



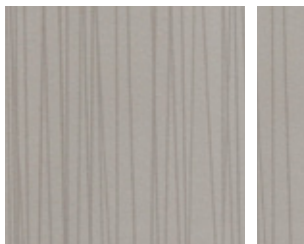
PEWTER MESH



SATIN STAINLESS



COSMIC STRANDZ



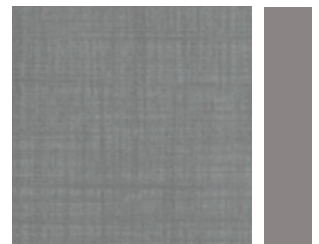
ASTRO STRANDZ



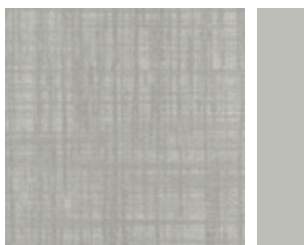
VAPOR STRANDZ



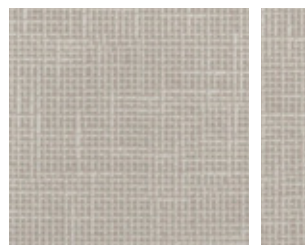
DESERT ZEPHYR



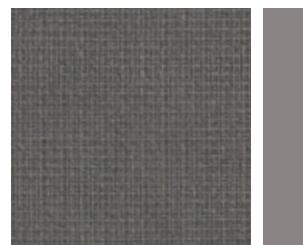
BATTLESHIP  
EDGE: NORTH SEA



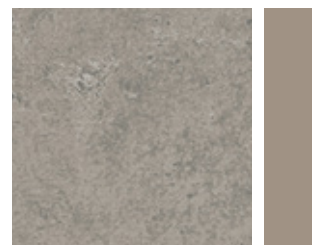
MUSHROOM  
EDGE: FASHION GREY



CLASSIC LINEN



STEEL MESH  
EDGE: NORTH SEA



POLISHED CONCRETE  
EDGE: SHADOW

HPL WOOD GRAINS WITH EDGE DEFAULT (MATCHING OR COORDINATING)



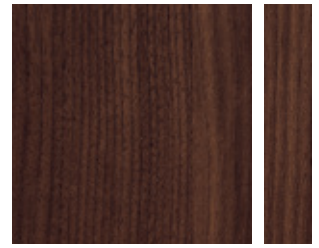
KENSINGTON MAPLE



MANTOBA MAPLE



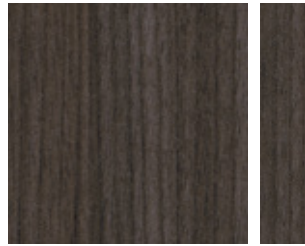
RIVER CHERRY



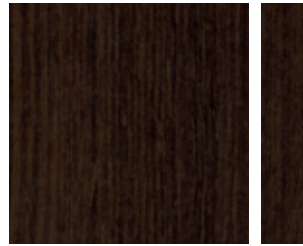
COLOMBIAN WALNUT



BEIGEWOOD



SKYLINE WALNUT



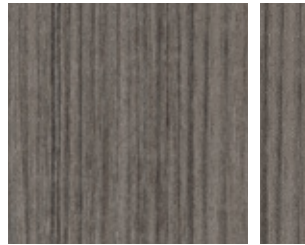
CAFELLE



WILD CHERRY



ASIAN SAND



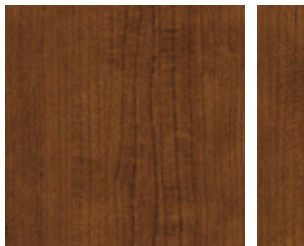
PORTICO TEAK



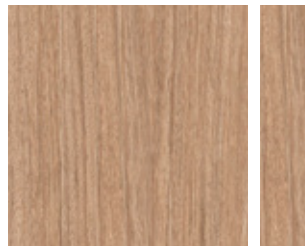
FLORENCE WALNUT



AMBER CHERRY



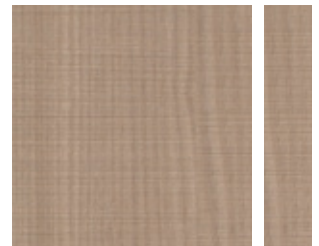
SHAKER CHERRY



LANDMARK WOOD



VERANDA TEAK



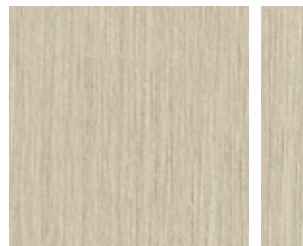
PARK ELM



GREY ELM



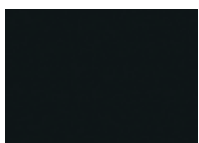
HIGH LINE



PHANTOM ECRU



SILVER OAK PLY



Black



Black Wrinkle



Light Grey



Medium Tone



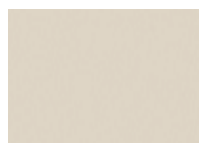
Silver Metallic



Slate



Soft White



Putty



Red\*



Green\*



Blue\*

\*Refer to Product Finish Specifications for Availability

POWDERCOAT

**SOLIDS**

HPL Wilsonart	Default Edge Color Code
Frosty White 1573-60	Winter White EFW
Designer White D354-60	Designer White EDW
Antique White 1572-60	Soft White EAW
Pepperdust D327-60	Dust EPD
Shadow D96-60	Shadow ESH
Slate Grey D91-60	Slate ESG
North Sea D90-60	North Sea ENS
Fashion Grey D381-60	Fashion Grey EFG
Dove Grey D92-60	Fog EDG
Black 1595-60	Black EBL

**PATTERNS**

Shadow Zephyr 4857-60	Fashion Grey EFG
White Tigris 4783-60	Fashion Grey EFG
Grey Mesh 4877-38	Fashion Grey EFG
Pewter Mesh 4878-38	Pewter Mesh EPM
Satin Stainless 4830-60	Brushed Silver EBS
Cosmic Strandz 4941-38	Cosmic Strandz ECZ
Astro Strandz 4940-38	Astro Strandz EAS
Vapor Strandz 4939-38	Vapor Strandz EVS
Desert Zephyr 4841-60	Desert Zephyr EDZ
Battleship 5014-60	North Sea ENS
Mushroom 5013-60	Fashion Grey EFG
Classic Linen 4943-38	Classic Linen ECL
Steel Mesh 4879-38	North Sea ENS
Polished Concrete 5022-38	Shadow ESH

**WOODGRAINS**

Kensington Maple 10776-60	Kensington Maple EKM
Manitoba Maple 7911-60	Manitoba Maple EMM
River Cherry 7937-38	River Cherry ERC
Colombian Walnut 7943-38	Colombian Walnut ECW
Beigewood 7850-60	Beigewood EBW
Skyline Walnut 7964-38	Graphite Walnut EGW
Cafelle 7933-38	Nightfall ENF
Wild Cherry 7054-60	Wild Cherry EWC
Asian Sand 7952-38	Asian Sand ESA
Portico Teak 8210-38	Portico Teak EPT
Florence Walnut 7993-38	Florence Walnut EFL
Amber Cherry 7919-38	Amber Cherry EAC
Shaker Cherry 7935-60	Shaker Cherry ESC
Landmark Wood 7981-38	Landmark Wood ELW
Veranda Teak 8209-38	Veranda Teak EVT
Park Elm 7967-38	Park Elm EPE
Grey Elm 8201-38	Grey Elm EGE
High Line 7970-38	High Line EHL
Phantom Ecru 8212-38	Phantom Ecru EPH
Silver Oak Ply 8203-38	Silver Oak Ply ESO

POWDERCOAT Color	Color Code
Black	BB
Black Wrinkle	BW
Light Gray	LG
Medium Tone	MT
Putty	PB
Silver Metallic	SM
Slate	SL
Soft White	SW
Red*	RD
Green*	GR
Blue*	BL

*\*Available on select products & large quantities, consult factory for details.*

**NON-STANDARD FINISH SPECIFICATIONS**

**WILSONART HPLS**

- 5% Upcharge
  - Matte codes: -38, -60
- 10% Upcharge
  - Premium codes: -07, -18, -22, -78
- 15% Upcharge
  - Premium codes: -12, -16, -19, -21, -28, -35, -45, -52, -55, -88

*All other Non-Standard Wilsonart finishes, consult factory for pricing.*

**FORMICA HPLS**

- 10% Upcharge
  - Matte code: -58
- 15% Upcharge
  - Matte codes: -42, -43, -SP, -MC, -NT, -WR

*All other Non-Standard Formica finishes, consult factory for pricing.*

**PIONITE HPLS**

- 15% Upcharge
  - Matte codes: Textured, Suede

**NEVAMAR HPLS**

- 15% Upcharge
  - Matte codes: Textured, Suede

*All other Non-Standard Pionite or Nevamar finishes, consult factory for pricing.*

**CONSULT FACTORY FOR SPECIAL PRICING & AVAILABILITY FOR ANY HPL BRANDS OR FINISHES NOT LISTED ABOVE.**

*This color card is for reference only.*

*Colors & finishes have been reproduced as accurately as printing will allow.*

Contact the manufacturer to order samples & verify true color/finish:  
[www.wilsonart.com](http://www.wilsonart.com), [www.formica.com](http://www.formica.com), [www.pionite.com](http://www.pionite.com), [www.panoram.com/nevamar](http://www.panoram.com/nevamar)

*Product details and/or colors are subject to change without notice.*