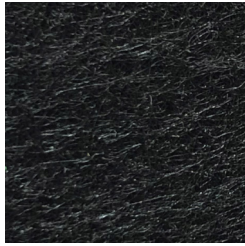


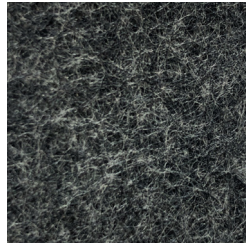


# ezoBord Sample Colors

## 1/2" (12mm)



PB09 - PURE BLACK



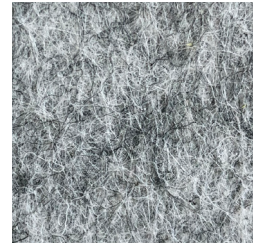
CG06 - CHARCOAL GRAY



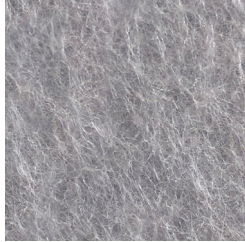
BG07 - BOLD GRAY



LB01 - LIGHT BEIGE



SG04 - SILVER GRAY



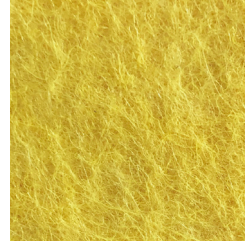
PI14 - POLAR ICE



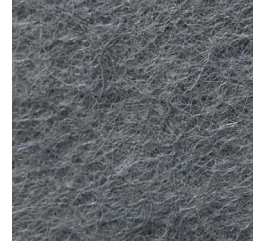
CW04 - CLASSIC WHITE



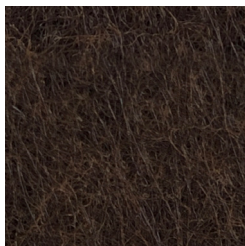
DS10 - DESERT SAND



SD18 - SUNNY DAYS



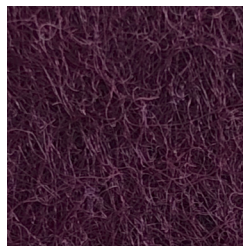
EG11 - ELEPHANT GRAY



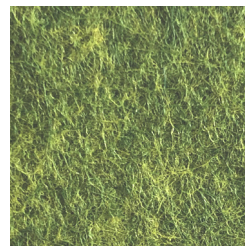
TB35 - TREE BARK



BR34 - BRICK RED



GV36 - GRAPE VINE



MG10 - MOSS GREEN



RB08 - ROYAL BLUE



EB50 - EVENING BLUE



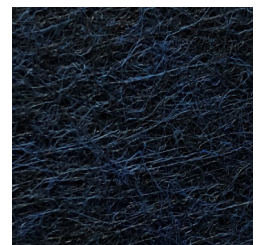
VC97 - VANILLA CREAM



SP99 - SUNSET PINK



AB32 - AEGEAN BLUE



MN12 - MIDNIGHT NAVY

### COMPOSITION

100% PET (min. %50 recycled content)

### THICKNESS

1/2" (12mm) standard.  
Other thicknesses available; minimum order quantities apply

### WEIGHT

16.0lbs (7.26kg) | ±5%

### HARDNESS

60-65 (Shore C)

### DIMENSIONS

48" (1219mm) x 108 3/16" (2748mm)  
(±1mm)

### FIRE TESTING

- North America:
  - ASTM E-84 Class A\*
  - CAN ULC S102-10
- Europe and UK:
  - EN13501-1: 2007

### ENVIRONMENT

Made of polyester fiber, min. 50% of which comes from recycled water bottles which contributes to LEED MR Credit & BREEAM Health & Wellbeing, Materials points due to recycled content, acoustic performance, & low emitting materials. No VOC's: CDPH v1.2 and REACH SVHC Compliant.

### ACOUSTICS

Refer to ASTM C423 test charts for specific absorption coefficients. NRC 0.80 (subject to mounting conditions)

### APPLICATIONS

Wall and ceiling, tack-boards, visual & acoustical privacy barriers, acoustic canopies, & other custom applications.

### PRODUCT VARIANCES

Variation in fiber mix & colour may occur. All products will be supplied within commercial tolerances.

### GENERAL

Tackable, impact resistant, bacteria resistant, moisture resistant, installation friendly.

### CUSTOM ORDERS

Custom design options include CNC cutting for virtually any shape & printing.

*\*Upon request, 1/2" (12mm) sheet material is treated with USA origin post-production flame retardant to Class A surface burning characteristics. Post sheet production FR treatment does not contain any Red List Restricted Chemicals & complies with California Proposition 65. Contact customer service for technical information, test data & safety data sheets for flame retardant.*