



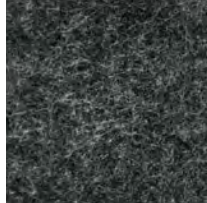
# Primeway

## ezoBord Sample Colors

1/2" (12mm)



PB09 - PURE BLACK



CG06 - CHARCOAL GRAY



BG07 - BOLD GRAY



SG04 - SILVER GRAY



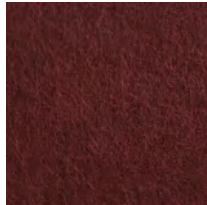
CW04 - CLASSIC WHITE



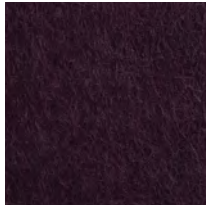
DS10 - DESERT SAND



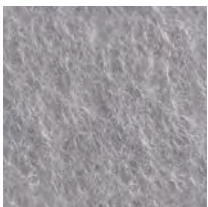
SD18 - SUNNY DAYS



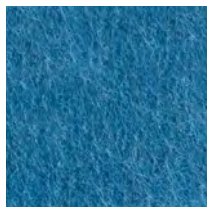
BR34 - BRICK RED



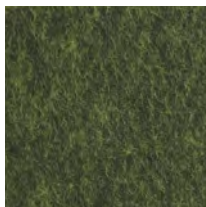
GV36 - GRAPE VINE



PI14 - POLAR ICE



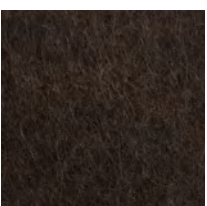
OB14 - OCEAN BLUE



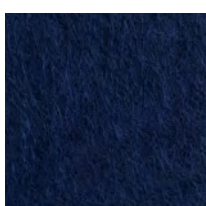
MG10 - MOSS GREEN



EG11 - ELEPHANT GRAY



TB35 - TREE BARK



RB08 - ROYAL BLUE

### Colors

15 standard colors.

### Composition

100% Polyester (min 50% (+/-) recycled PET Fibre).

### Thickness

1/2" (12mm) standard, Other thicknesses available; minimum order quantities apply.

### Weight

16lbs (+/- 5%) for 1/2" (12mm) sheet.

### Dimensions

48" (1219mm) x 108.25 (2750mm) (+/- 1mm).

### Fire Testing

ASTM E-84 Class A / CAN ULC S102.

### Environment

Made with recycled polyester fibre, 50% +/- of which comes from recycled water bottles which contributes to LEED MR credit of Recycled content. No VOC's.

### Acoustics

NRC 0.85 (subject to mounting conditions) Refer to ASTM C423 test chart for specific absorption rate/frequency

### Applications

Wall and ceiling, tackboards, visual and acoustical privacy barriers, acoustic canopies, and other custom applications.

### Product Variances

Variation in fiber mix and colour may occur. All products will be supplied within commercial tolerances.

### General

Tackable, impact resistant, bacteria resistant, moisture resistant, installation friendly.

Product Variances | Variation in fibre mix and colour may occur. All products will be supplied within commercial tolerances